



Migrant Mother
Photograph
By Florence Owens
Thompson
During February or
March of 1936,
California
iconic image of
the Great Depression

https://en.wikipedia.org/wiki/Florence_Owens_Thompson

COMPARATIVE STUDY

<http://artworkbyannarose.blogspot.ae/2014/06/new-self-portrait-wait-and-reward.html>



The Wait and the Reward
Painting
By Anna Rose
Bain
June 14, 2014
Standard
Portrait, 8×10 in

<https://www.lifesitenews.com/news/heart-rending-young-slovakian-sculptor-captures-post-abortion-pain-mercy-an>



Memorial for Unborn Children
Sculpture
By Martin Hudáček
April 2, 2012
Approximately
24x24inch

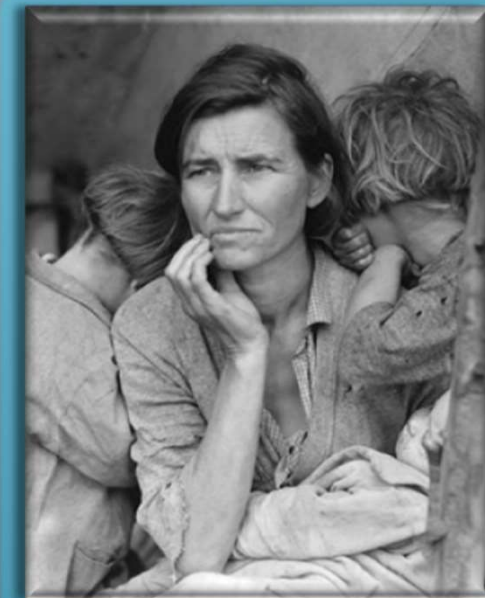
Art is a combination of expression, creativity, and imagination. It is the most intense mode of individualism; everyone has their own definition, perception, and tools when it comes to art. Art is an embodiment of our deepest selves, it is a form of communication that allows us to express and display deep meaning and emotion – it can reveal stories without words. There are many different medias of art, however what fascinates me is how even though the tools, time periods, and intentions differ with these three images – they all hold intense emotions and messages on a similar subject- motherhood.



Interpretation of function and ideas for my chosen art comparative study

Maternity and the relationship between a mother and her child is one of the most meaningful and powerful connections in my opinion. It is often exhibited in different forms of art. For this comparative study I will be exploring and analysing these themes through three individual art works.

I have chosen both two dimensional and three dimensional works- a photograph, a painting, and a sculpture in order to explore how these themes can be delineated through different medias of art



Annotating Dorothea Lange's *Migrant Mother*, 1936

Analysis of formal qualities

Lange, Dorothea (American, b.1905)
Migrant Mother 1936
Photograph, Missouri, United States of America

"Destitute pea pickers in California.
Mother of seven children. Age thirty-
two. Nipomo, California"

The mother and her children are in a pyramidal position, drawing the viewers attention.

The triangular shape is a common composition in photos as it often works the best

The mother is in the centre of the photo, and is the main focus. Two of her children are at either side of her; the children could symbolise being the mothers wings because of their positions- like an angel.

The black and white effect/values of the photo truly capture the emotion and soul of the picture in depth. As well as decipher the photographs time period since black and white photographs are a manifestation of the past.

I believe that Lange chose to implement the prominent Leonardo da Vinci's triangular "golden ratio". The triangle has the envied position of being the simplest of all the polygons, which is what human nature subconsciousness desires - simplicity.



https://en.wikipedia.org/wiki/Florence_Owens_Thompson

The woman's arm is in a tense position, vertically leading towards her face - which drives more attention towards her distressed face.

This comparative study examines links between Dorothea Lange's *Migrant Mother* and the imagery appropriated in it. It explores the themes of maternity and deep emotions.

The values in the photo have a contrast between the light and paleness in certain areas, such as the baby in the mothers hand. The darker values in places such as the hands, hair, skin, and clothes. This could possibly be because their figures have been exposed to the sun as a result of the labour they have endured and their environment (in camps).

The holes and distressed clothing furthermore display the harsh conditions they were living in - from the poverty to the inability of the mother to provide materialistic needs to her children.

The texture of clothing and hair also are a significant element in the photograph. The hair and clothes are dishevelled and appear unclean, which emphasises the solemnity in the photo and manifests the penurious conditions they were in- as well as the struggles that mothers and their families had experienced at the time.

"Seeing is more than a physiological phenomenon... We see not only with our eyes but with all that we are and all that our culture is. The artist is a professional see-er." - Dorothea Lange

Contextualizing *Migrant Mother*

Historical context

Migrant Mother is an iconic photograph taken by Dorothea Lange, an influential American photographer and photojournalist, during the time of the Great Depression circa February or March of 1936, in California.

Context

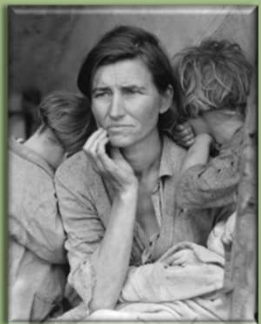
The woman was the mother of seven children and on the brink of starvation, who Lange met in a camp while helping poor families relocate. She (Lange) wanted to capture the suffering she was seeing around her. Lange approached one of the idle pickers in the camp, a thirty-two year old woman sitting in a tent, surrounded by her seven children. She saw and approached the hungry and desperate mother and started photographing her.

Analysis

The image is a black and white photograph of a mother during The Great Depression which took place during (1929-1939) surrounded by her three children. The woman is in the centre of the photo, while she has two young children each on either side of her, and the third is a baby at the corner of the picture, behind the wooden pillar. The woman is the only figure in the photo who is showing her face whose gaze does not meet the camera, whereas her children are looking away as only the back of their heads are shown- this causes the audience to focus on the mother and her look of anxiousness. Her face appears worried, as she has stress lines on her face. Her gaze is looking in the opposite direction, and she seems to be looking afar. The black and white really captures and intensifies the emotion of despair and loss - as well as create a subdued tone.

Evaluation of cultural significance

The mother seems to be looking out, as if looking at the future, so there is a glimmer of hope. This relates to the context of the photo, where the mother is not only looking at the future of her own life, but as well as symbolizing the future of America during this time of grief. Furthermore, the black and white values in the photography capture and intensify these emotion of despair and loss that reflects the aspects of the citizens during this time period which provides an accurate and powerful display of the event. Although the woman in the photograph appears to be relatively youthful, she is frowning which accentuates the wrinkles around her face creating a distressed and anxious appearance. She also appears to have risen her hand upon her face, slightly pinching it; this shows the tension she is facing. In addition to her exhausted facial features she is also wearing raggedy and worn out clothing, which further demonstrates the poverty people faced during the time, especially those with a family to take care of. The distressed clothing furthermore symbolises the hard work and labour people performed during this time, and shows how lower and middle class folk life and views on family.



http://www.loc.gov/r/r/pri-nt/list/128_mign.html

Photograph from Lange's *Migrant Mother* album

Interpretation of function and purpose

As well as symbolising the depression and hardships faced at this period of time, it also portrays the struggles of motherhood and a mother's connection with her child. Her children are leaning on her in the photograph, which symbolises how children lean on their mother for support- it also portrays the mother's selflessness as a mother puts her children first and does everything she can to help them which can be stressful and sacrificial in times of deep despair. Even though this photograph shows the hardship and relationship between children and mother, it mainly focuses on the mother as her expressions are the only one shown. The intense and meaningful look in her face clearly expresses to the audience the stress and anxiousness she is feeling as a mother, and how tragedies such as the great depression affect the mother's life.

No country has ever closely scrutinized itself visually.
-Dorothea Lange

<http://www.brainyquote.com/quotes/quotes/d/dorotheala610942.html>



The black and white effect reflects the time period as well as captures the soul of the photograph

http://www.loc.gov/rr/print/list/128_migm.html



Photograph from Lange's Migrant Mother album

The photography triggers an emotional response from the audience as well as conveying an economic image which creates an understanding of The Great Depression. The photography embodies the traumatic and stressfulness of the time period through the perspective of a migrant mother and her children.

The composition in the photo emphasizes on the mother and children's vulnerability; both children have their bodies faced opposite the camera lens and are leaning on the mother who is tilting her head.

https://en.wikipedia.org/wiki/Florence_Owens_Thompson

Annotating and contextualizing Anna Rose Bain's *The Wait and the Reward*, 2014

Analysis of formal qualities and cultural context

Rose Bain, Anna (American, b.1985)
The Wait and the Reward, 2014
Oil Painting, 8×10 inch- oil on linen
Westminster, United States

This comparative study examines links between Anna Rose Bain's *The Wait and the Reward* and the imagery appropriated in it. It explores the themes of maternity and deep emotions.



The painting displays a young pregnant woman looking into the mirror and imagining herself with her future unborn child. The real figure is pregnant however the image seen is of her and her newborn child.

Pink symbolizes femininity and tenderness; two maternalistic qualities.

The mother's arm position – one hand under belly, one on her chest, demonstrates how she would hold her baby. This draws the viewer's attention.

The values and colours in the painting are subtle, which fits the mood and theme.

The painting is harmonious as the colours are close in value,

Imagining her baby in her arms

The reflection in the painting acts as a time-lapse of one person becoming two in this "future" mirror.

The artist wanted to "maintain a feeling of freshness in the painting, and used layered detailed texture with the oil paint known as a technique called *alla prima* painting or wet-on-wet.

Seemingly modern, western mother. The woman has blonde hair and white skin, judging by this and the clothing it can be concluded that she is Western/ European.

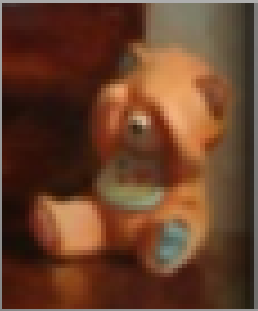
The mother is in the center of the photo, drawing the viewer's eyes.

Her body is holding her baby in both images without her arms changing positions—the natural capacity for nurturing written into her body and displayed through her actions.

The composition uses asymmetrical symmetry. Which can be created when a variety of elements create a visual balance. It is a result of an unequal distribution or visual weight on each side of the composition. This is demonstrated as the mother on the left side of the painting is different to the right side (her reflection).

Interpretation of function and purpose

I found this painting quite meaningful and beautiful, not only for the aesthetical and technical point of view but also the deep and emotional message it expresses. The painting portrays the deep and emotional connection a mother has with her child and additionally shows the adventure that is pregnancy and the maternalistic experiences and qualities that come with it. This can be deciphered from the title of the painting itself *The Wait and The Reward*; symbolizing the patience endured during pregnancy, and the reward of motherhood at the. The artist Anna Rose decided to paint the self portrait. Similarly to *Migrant Mother*, the painting mainly focuses on the mother as she is in focus.



The woman is seeing purpose--a purpose which is crucial for many girls and women to realize as they struggle with body issues.

In the lower left corner of the painting a small teddy bear can be seen with differently-coloured feet. This could symbolize the uncertainty of the gender (blue for male, pink for female) and the unknown future. As for covering its eyes, it may indicate a similar message, that the future can not be yet seen and motherhood is filled with uncertainty and surprises .

The painting triggers an emotional response from the audience as well as illustrates the sensations and experiences a woman goes through during pregnancy. The painting embodies the intense emotions of the mother through the perspective of her self reflection .

Anna Rose Bain has published several oil paintings which have similar styles , techniques, and themes to *The Wait and The Reward*. Such as *Lullaby* and *Twin Arts*. These paintings also encompass maternity and self reflection.



Annotating and contextualizing Martin Hudáček's *Memorial for Unborn Children, 2012*

Analysis of formal qualities and cultural context

Hudáček, Martin (Slovakian, b.1984)
Memorial for Unborn Children, 2012
Sculpture, Slovakia

Presents a free standing sculpture that very beautifully captures image of a core component of post abortion healing

The mother seems to be carved using stone material, whereas the child is sculpted using a different, transparent material. This could symbolise how the mother has been hardened and is grounded by life's stress, whereas the child is pure and absent of any distressing and depressing emotions.

Shame is also conveyed... And the daughter who blesses her, reaching up to touch her, symbolizes the height of forgiveness. The transparency of the child means she comes from a pure place.

The sculpture exhibits a closed composition as objects are contained within the perimeter of the image.



Irregular, three dimensional forms are basic to the sculpture (organic-lifelike).

Built on Christian themes of Christ's forgiveness and the dignity of human life.

Many Christians believe that (voluntary) abortion is wrong, because of their belief that the act of abortion is murdering an unborn baby. While people argue the point of conception and the viability of a fetus, there is no doubt that the Bible does condemn the taking of another person's life. This relates to the sculptures meaning in social and cultural context, as abortion is often shun not only in religion - but society as well.

This comparative study examines links between Martin Hudáček's *Memorial for Unborn Children* and the imagery appropriated in it. It looks explores the themes of maternity and deep emotions

The sculpture shows a woman in great sorrow grieving her abortion. The second figure in the work is the aborted child, presented as a young child, who in a very touching, healing way, comes to the mother, to offer forgiveness.

Child seems to be comforting mother

Child being 'transparent' almost angel-like in appearance. The mother appears to be in anguish. the child is reaching out to touch the mother's head.



Interpretation of function and purpose

I found this painting quite meaningful and beautiful, not only for the aesthetical and technical point of view but also the deep and emotional message it expresses. The sculpture portrays the deep and emotional connection a mother has with her child and additionally shows the dark side of pregnancy and the sacrifices that may come with it. It expresses the sorrow and the maternalistic experiences and qualities that come with it. Martin, who named the work *Memorial for Unborn Children*, said the sculpture also “expresses hope which is given to believers by the One who died on the cross for us, and showed how much He cares about all of us.”

Martin Hudáček of Slovakia was moved to create this sculpture to draw attention to the devastation abortion can bring to the woman, and to the fact that through the love and mercy of God, reconciliation and healing are possible.



The sculpture symbolises the important value of human life and the necessity to protect it from conception. The main themes of the piece are motherhood, loss, and forgiveness.

It can be noted that the artist chose to sculpt a little girl rather than a baby – It is a common belief with Christians that in Heaven the children will be toddlers as the child is here.

The sculpture triggers an emotional response from the audience as well as conveys an effective representation of post-abortion trauma, the work sensitively communicates this reality, and draws out many emotions and interpretations. The sculpture embodies the grief and regret that comes with the sacrifice of abortion through the perspective of a mother and her child.

COMPARISON BASED ON CONTEXT AND THEME

The artworks all share a similar theme- maternity, specifically motherhood. All the art pieces focus on the portrayal of the relationship between mother and child. Although the contexts of the works differ, they can be compared to an extent. For instance, there is a sense (theme) of hope in each work.

Migrant Mother and *The Wait and the Reward* are connected through their depiction of the personal and emotional experiences mothers go through. They show the patience that mothers must endure, both during times of struggle (*Migrant Mother*) and during the journey that is pregnancy (*The Wait and the Reward*). Furthermore, in both works the mother is visualized as the main focus and the viewer's eyes are drawn towards them. Both mothers are "looking out" to something - which may be a symbolism to the unknown and hopeful future. The future of the *Migrant Mother* and her family, and the future of the woman's new life with her newborn.

Migrant Mother and *Memorial for Unborn Child* are connected through their depiction of the struggle and sorrow that come with motherhood. Both works show the patience that mothers must endure- through war, and through abortion. *Migrant Mother* and *Memorial of an Unborn Child* both have significant social context. *Migrant Mother* manifests the social context of the Americans during the Great Depression, while *Memorial of Unborn Child* shows the social context in a religious point of view (Christianity), as well as society in general and the common controversial views towards abortion.

Memorial for Unborn Child and *The Wait and the Reward* are connected through their depiction of the personal and emotional experiences mothers go through. Despite *Memorial for Unborn Child*'s despondent atmosphere, it also symbolizes Hope, similarly to *The Wait and the Reward*. The hope of forgiveness and contentment for both mother and aborted child, and the hope that the mother experiences in the painting with her pregnancy.



ELEMENTS OF ART

COLOUR AND VALUE

Colour is one of the main elements of art, it can define an art piece and is often used to as symbolism. Colours can be seen to have three properties – intensity(vividness of colour), hue (the colours name), and tone (lightness and darkness). . The second property is intensity, which refers to the vividness of the colour. The lightness or darkness of tones or colours. Value refers to the lightness or darkness of colours, which range from white, grey, to black



The photograph is developed in monochrome tones, using a variety of values ranging from white, grey, to black. There is a high contrast between the values, the darkest being black, and the lightest being white.

In regards to the elements of art in the colour and values aspect, these art works all share a common aura in the use of soft and subtle colours and values. Unifying them in this sense.

The painting features mainly mellow and pastel colours, which emits a soft and warm mood.

The colours used are also quite feminine and delicate, such as the pink of the dress.



The painting is the only work featured that uses a variety of colours.

The child in the sculpture is transparent and colourless. The sculpture is monochromic, largely due to the material used to craft the sculpture-clay/cement which is a commonly used material in sculptures



Both the photograph *Migrant Mother* and the sculpture *Memorial for Unborn Children* are monochromic and colourless, which compliments the dark themes of the works.

ELEMENTS OF ART

TEXTURE AND SHAPE/LINE

Texture, shape, and line are three of the main elements of art and are important in the analysing of art. Texture refers to the appearance and physical properties of the components of an art work, from the way they look or feel. Shape is an enclosed space which can be flat, two dimensional, and is limited by length and width. Line is defined by a point that creates a path moving into space that may be two or three dimensional, abstract, or implied.



The photograph is figurative because it is clearly derived from real object source making it representational.

The mother's hand is curved and reaching towards her face.

The textures of the mother and children are smooth as there are subtle variations of grey values. This is however contrasted with the background as there is an appearance of rough textures. The clothing is slightly dishevelled giving it a distressed appearance.

This adds to the harsh mood as well as the harsh lines. Additionally, there is a rough texture of clothing and hair.

Migrant Mother and *Memorial for Unborn Child* are both figurative art pieces as they are representational. The mothers are both composed in specific postures and their hands are reaching towards their faces. Additionally, the composition and shape of the children in both works is similar as they are making contact with the mother as a way to ground them.

Artisan, a two-dimensional painting. The lines and shapes used in the overall appearance of the painting are clean. As well as delicate lines and smooth textures are used which fit the mood and painting well.



Memorial for Unborn Child and *The Wait and the Reward* are linked in their incorporation in the use of smooth and delicate textures and lines.

A figurative, three-dimensional sculpture. The Mother can be seen bent over and crouching at the child's level.

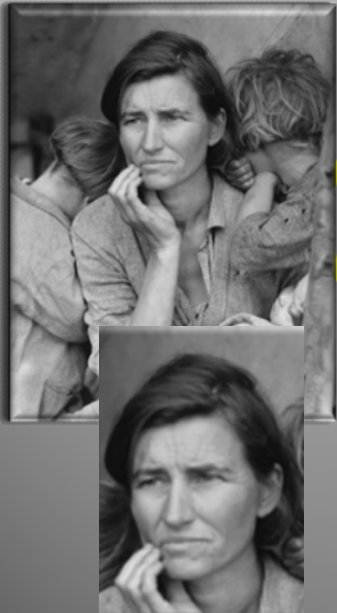
The shapes and lines are delicate and the textures are quite smooth. The child is transparent and the texture appears glassy whereas the mother appears smoother and heavier.



PRINCIPLES OF ART

HARMONY AND EMPHASIS

Harmony and emphasis are two of the principles of art. Emphasis is when an element within the artwork draws attention and stands out making it a focal point. This creates a sense of importance and is intentionally used to communicate a message or feeling. Harmony in visual design means all parts of the visual image relate to and complement each other. Harmony pulls the pieces of a visual image together.



The main focal point of the photograph is the mother as she is in the centre and Emphasis on her expressions. Additionally, the black and white effect emphasises on the soul and context of the photo. In relation to harmony, this piece is Harmonious depressive.

In *The Wait and The Reward*, there is an Emphasis on the mother and her position/composition. She is the main focal point in the painting. The use of harmonious colours that complement each other and create a soft and subtle look is also used.



In *Memorial for Unborn Child*, the symbolism of child being pure ghost like is emphasised with the artists choice of making her transparent and glass like. Similarly to *Migrant Mother*, the sculpture also is harmonious depressive



These art works all share a common aspect in relation to harmony. The works attract the viewer with their harmonious values which create a visual balance.

As I mentioned previously, the theme of the works is maternity and the relationship between the mothers and children. There is a shared emphasis towards the mothers and their dominant emotions that are deciphered. Furthermore, the application of values, light, composition, and texture also accentuate these prominences.

PRINCIPLES OF ART

PROPORTION, BALANCE, AND MOVEMENT

Proportion, balance, and movement are important of the principles of art that play a crucial and significant part in an art piece. Proportion refers to the ratio of an element in the art's size and scale, it is necessary to discuss proportion in relation between the objects of the piece. Balance relates to ones physical sense, it is a sense of visual stability in a composition. The most common balance seen in art are symmetrical balance, asymmetrical balance, and radial symmetry- balance can be applied to both three and two dimensional works. The movement in an art piece is the visual flow- where the viewers eyes follow due to the composition and elements of a piece.



The mothers head appears to be equivalent and in balance/ in level with the children's heads. The movement of mothers arm draws readers eyes towards the mothers face. Asymmetrical balance

The mother and child both have realistic proportion, as well as the reflection of the mother. The scale of the baby which is a figment of the mothers imagination is significantly smaller than the mother. In regards to balance, asymmetrical balance can be seen in the composition of the painting. This creates tension through contrast and is visually interesting.



The mother and child are in proportion with each other, they both have realistic proportion and are life sized. The mother is larger than the child, however since she is bent over she is put at the same level as the child. Similarly to *The Wait and The Reward*, the sculpture also employs asymmetrical balance. The child's hand that is seen reaching forward towards the top of the mothers head utilizes movement, it creates visual flow as viewers eyes follow the movement of the figure's elements.

To a create balance within a composition, both positive and negative space must be arranged in a harmonious and even distribution (equilibrium)

Comparative Study – Florence Owens , Anna Rose, Martin Hudáček

Conclusion, Reflection, Influence

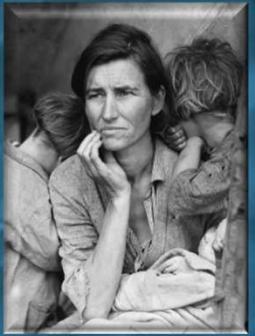
All three artworks are unified by their ability to uniquely inspire maternalistic qualities through their works by utilizing a range of techniques and elements. I applied what I have learned from studying Florence Owen's *Migrant Mother*, Anna Rose Bain's *The Wait and the Reward*, and Martin Hudáček's *Memorial for Unborn Children* in the following studio piece. I incorporated related themes and styles that I have discovered through comparing the works to create a powerful painting representing the loving maternal bond between a mother and her child.

Function and Purpose
 Although each artist had different aims in the portrayal of their art, all three works functioned to present a viewpoint on the expression of the mother's individual experiences. Each work may be connected to a message on social values, culture, and the special, intimate connection between mother and child. Furthermore, the artworks I explored all effectively exerted a sense of wholeness.

Formal Qualities
 Conceivably, the qualities in which all three artists thrived in was the usage of harmony and the element of colour/texture. Although the mediums of the art works are different, the artworks all exploit the mediums to their potential to convey compelling images which are influential and influenced by the harmonious effect formed by an integration of the compositions and colours. The artists devised the composition of their works in both an aesthetic sense and strategically to emphasize certain features, as well as inspire their aura. Each artist also enabled colour to be a dynamic component in their work, and materialized it in aiding to project their message.
 The artists inspired me to explore these qualities and incorporate them into my own work: harmony, composition, and colour. Therefore I decided to create an oil painting, a media which I have undertaken previously. I enjoy oil painting and wanted to further increase my skills in it. Additionally, I think this would be the best media for the image I want to create.

Significance of Florence Owens *Migrant Mother* to my own work

Migrant Mother effectively displays how tragic external events resulting from political, social, and economical outbreaks harshly affect families, specifically mother and her children. The mother holds an intense expression, and holds the main focus of the photograph. This has influenced my work as I would like to highlight the endurance families go through during grievous times such as war.



Significance of Martin Hudáček's *Memorial for Unborn Children* to my own work

Martin's sculpture powerfully portrays the difficulty and loss that sometimes comes with motherhood. As well as capture the purity and redemption through the child figure.



Significance of Anna Rose's *The Wait and the Reward* to my own work

- THEMATIC INFLUENCE**
- ❖ Capturing the emotive expressions in the journey of maternity
 - ❖ Illustrating both the joys and the hardships of motherhood
 - ❖ Exposing the sacrifices mothers often endure for the sake of their children
 - ❖ Encapsulating the incomparable love of mothers

Anna's painting highlights the joys of maternity. I like the pose of the mother and the way she is holding her baby close to her, so I will use a similar pose and composition. Her painting style is realistic and she uses different shades and values to paint realistic skin tones and clothing. My work will also be in oil painting.

Cultural Context and Significance
 All three works have relevance in their contexts. Significantly *Migrant Mother* in retrospect to the iconic event of the Great Depression. They all seem to display a connection to cultural and traditional values. However, they establish a link with the past in contemporary methods. The cultural context of the artworks all have great influence in the way they were produced. Each work manages to represent their local culture while also touching on universal and timeless themes. All three works originate from a Western culture, which is reflected in the way it was impacted the elements of their work. This inspired me to reflect my own culture and traditional values into my own painting.
 My Studio Piece will visualize the beautiful, strong bond between a mother and her child, as well as tackle powerful perspectives on the harsh realities such as war, which has affected my own culture (Middle East).

Communication of my ideas and intentions

Maternity حب الأم يبدأ في الرحم و يسري في القلب ثم تزرع نفسها في الروح و ينمو دائم ثم ينتشر حتى يزرع على العالم يشمل نورها في الكون

BRAINSTORMING IDEAS
OIL ON CANVAS - medium size 70x60cm
Mother and child

COMPOSITION
emphasis on mother & child (focal point)
1/3 rule
poem in back

Calm facial expression
explore themes of love & sacrifice
represent culture with traditional clothing
explore topic of war - maybe in background?

Sheila
Cultural clothing
Colour scheme? green or pink
green symbolizes hope
pink symbolizes femininity, softness love

In effort to tackle another issue that is raised in my culture, I chose to paint the woman with darker skin. Initially, I wanted to paint this skin tone because I had enjoyed working with it the most in the past, I also believe it fits well with the overall colour scheme. However I was further influenced to paint her dark skin because of the stigma revolved around dark skin, which is relatively dominant in my culture. Black skin is often viewed as inferior, and whiter skin is typically sought after as the ideal image of beauty. This mindset has lasted for ages throughout generations and many young girls and boys are raised into following this perspective. I have noticed that there is a great lack of artworks portraying black women or men in my school, which in my opinion is sad, especially since it is quite common to have darker skin in this region of the world. I believe it is important to represent all types of people, this has lead me to paint the figures in my painting with darker skin. I wanted to show how all shades of skin could be beautiful, and that there is nothing wrong or unusual of painting with darker colours. This is further emphasized because the women in my painting is a mother, and, in my perspective, all mothers possess beauty.

Significance of Colour in my work

RED

Since I wanted to depict the hardships mothers go through such as war, which was influenced by Migrant Mother's context of the Great Depression, I managed to achieve this through the colours used in the background. The Fire like background symbolizes two things: the war and the strength of the mothers love. Red often symbolizes passion, love, and strength - so I thought it suitable for the theme of my painting, Furthermore, the background accentuates the figures of the mother and child and catches the audience's attention.

GREEN

The use of green in the mothers clothing serves as a symbolism for hope and abundance. Additionally, green also characterizes tranquillity, which is emitted in the mother's expression. Green is also associated with mother nature. Psychologically, people who are kindred with the colour green posses motherly qualities, therefore I sought it suitable for my painting. This contrasts with the inflamed, vibrant background

<https://color.adobe.com/Primary-Red-Colour-Scheme-color-theme-221648/>



<https://gamedevelopment.tutsplus.com/articles/picking-a-color-palette-for-your-games-artwork-gamedev-1174>

MONOCHROMATIC COLOURS

I implemented three different monochromatic colour schemes into my painting- with the skin tone, the women's dress, and the background. I contrasted with the values and textures to my painting to create interest. The use of the monochromatic colour schemes in my opinion adds elegance, harmony and helps emphasise the significance of each colour.

Luminosity surrounding mother figure symbolizes the mothers radiance and light, as well as accentuates her as the focal point.



These paintings have also inspired me as they are a similar style to what I would like to paint such as the compositions, realistic styles, and colours . I particularly admire the Iranian artist Mitra Shadfar's paintings as she paints traditional women and creates hyper realistic paintings showing a mother and her baby.



"Maternal Love" by Mitra Shadfar

I wanted to create a painting to express the prominent theme Influenced by the artworks I have investigated for my comparative study. I decided on painting a mother holding her baby closely to her in a loving matter as the main subjects in my painting. Similar to Anna Rose Bain's *The Wait and the Reward*, I will be incorporating her realistic style of painting and soft brush strokes.



Poem

art¹
ɑ:t/
noun

1.
the expression or application of human creative skill and imagination to be appreciated primarily for their beauty or emotional power.

Applying two forms of art into my work has enabled me to demonstrate and develop my creative skills in both creative branches in a way in which they complement each other.



My initial sketch



Anna Rose Bain's *The Wait and the Reward* uses delicate lines and smooth textures, which has inspired me to try and mimic similar textures in regards to the mother's skin tone and clothing.

Translation of my poem

A mother's love begins in the womb
And it grows into the heart
Then it plants itself in the soul and abides there forever
Then it spreads till it blooms into the world
The light of her love ignites into the universe
Indeed (the entry to) paradise lies under their feet

حب الأم يبدأ في الرحم
و يسري في القلب
ثم تزرع نفسها في الروح
فنمو دائم
ثم ينتشر حتى يزهو
على العالم
يشعل نورها في الكون
فإن الجنة تحت أقدامهم

My written poem, trying & practicing handwritings



Florence Owen's *Migrant Mother* contains harsher, rougher textures in the background in contrast to the smoothness of the positive figures in the photo. I would like to apply this to create a dramatic and harsher background into my painting.



Martin's *Memorial for Unborn Children* shares a similar feature as my painting with the theme of hope

The spirit of a mother

حب الام يبدأ في الرحم
و يسري في القلب
ثم تزرع نفسها في الروح فينمو دائم
ثم ينتشر حتى يزهو على العالم
يشعل نورها في الكون
فإن الجنة تحت اقدمهم

"فإن الجنة تحت اقدمهم- feet

This particular line is a commonly known expression in Arabic and in Islam. It shows the status women and mothers hold in Islam. Mothers in the Islamic and Arab culture are given a high position of honor, commanding kindness and respect to be treated towards them. This is a beautiful verse to me and holds such a strong and beautiful meaning, therefore I wanted to include it as the last stanza in my poem.

To make my painting more special and interesting, I wrote a poem about mother's love in my native language, Arabic. This utilization of another form or art (poetry) adds a unique feature to my painting as well as helps emphasise the theme and incorporate the representation of my own culture. The poem serves as a creative, lyrical way to express the beauty and power of a mother's love. I want to paint the poem in a calligraphic style in the background in a bright yellow shade to draw attention and emphasis.



The bright yellow shades I used create a luminous effect and stand out in the background.

Reviewing and Refining my process and techniques



I began with painting the woman's skin using a variety of values ranging from dark to light brown. I found difficulty when I first started painting because I hadn't painted with oils for a while. I had to repaint several layers until I was satisfied with the base of the skin. After practicing it became easier to create the smooth and blended texture of the skin. I then added some red hues near the cheeks and eyes to make the skin more realistic and complex, creating a blushing expression. Lastly, I applied white shades in the areas where light naturally hits the face such as the forehead and under near the eyelids, and darker shades for contouring the face. I believe applying these techniques and using the shades of colour that I did made the face look intricate and realistic. Overall I am pleased with the skin tone and find it aesthetically pleasing.

I then went on to painting the woman's head scarf (known as a *Sheila* in Arabic). I applied what I had learned in painting the skin to create smooth and delicate lines by blending different values of green shades. Having previous experience with creating folds, this part was relatively easy. Nevertheless, my skills in painting the folds has improved significantly in comparison to my older paintings. I also added darker shades of brown and black into the head scarf to bring out the folds and make them look more realistic and intricate. I think the green colour complements the woman's skin tone well and they enhance each other which adds harmony to the painting, which is what my aim was.



Two features I would like to improve in my painting are the child's clothing and the mother's hand. I struggled with making the child's clothing look realistic on making smooth and naturalistic strokes. The same can be said for the mother's hand which is painted rather simplistically.

The new colour scheme for the dress was a success and looked much better in my opinion as it was more harmonious with the rest of the elements and colours in the painting. In addition, the colours look more mature and the folds are more detailed.

Afterwards I chose to paint the mother's dress. Initially I chose a lighter shade of green to paint with to experiment which colours would fit the best. However after applying the colour I was dissatisfied with the appearance as I thought it appeared odd looking, and wanted to improve. Therefore after the paint was dry I applied a new layer of the similar shades of green that I had used in the head scarf.

I left the background last. I created an ombre effect so that the colour fades from the darkest value (black) to a bright red, as seen in the photo. I wanted the background to look like flames that have been ignited as I previously mentioned in the communication of my ideas and intentions. I believe the colour scheme and technique I exerted has achieved this. I also added orange and yellow colours around the mother's figure to make her seem radiant and as a symbol of light and love shining out in the midst of the fire.



HOPE

Communication of my Ideas and Intentions

Even though the theme of maternal love in the works I have investigated and the painting I produced is dominant, parental love on a broader scale is an eminent element I would further like to explore. My next studio piece, titled "HOPE", will integrate the theme of parental love, war, and hope which I have previously employed.

I will be portraying an old man, presumably a father, and his son – a young child being carried on his back, in the midst of a war. The father will be done in pencil sketch in black and white representational his old age and the damage the war has done to him. His clothing will be ragged and torn to further illustrate the theme. The child however will be done in coloured pencil to symbolize youth and fertility. The work manifests the struggle the father withstands for the sake of his child; the sacrifices made in hopes of a better future for his offspring.



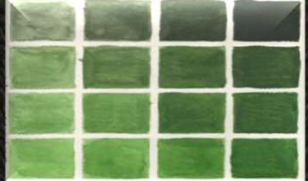
Picture of my incomplete work



Significance of colour

The child in my artwork is done in coloured pencil to act as a symbolism of hope. I chose the child's clothing to be done in shades of green as green often symbolizes hope in this context.

The values of green capture the essence of the art piece.



Analogous green colour scheme:
<https://annahergert.me/2012/10/25/decyphering-design-part-v-b-color-continued/>



Migrant Mother Influence on my work

The old man in my work projects an expression of distress and tiredness, his clothes are distraught and black and white to reflect the damaging effects of war that has impacted the society, as well as capture the soul of the image. The use of black and white values on the father are representational of oldness and dullness. I wanted to mimic the appearance of tattered clothing seen in Migrant Mother as they amplify the portrayal of the effects The Great Depression had, as well as add character to the photo. Therefore I made the clothing of the father in my work frayed and rough looking.



The Wait and the Reward Influence on my work

The father in my art is holding onto the child closely and securely in a protective and supportive manner. This aspect of my work was influenced by the mother in Anna Rose Bain's *The Wait and the Reward* as she is seen exhibiting a similar pose.

Memorial for Unborn Children Influence on my work

The child in my work symbolizes hope and serves as a support for the father. This is similar to the idea behind Martin's sculpture, and has led me to implement a similar visualization.



Meaning behind the background.

Backgrounds are important in the creation of artworks as they help compose the work together and form totality. They may also empower messages or themes, which is what the function of the background I chose to do does. I decided to stick a collection of foreign newspapers in Hindi and Arabic, with headlines featured around war and other issues.



BROKEN

War is a catastrophic disaster that not only destroys lives, but also the world through its misery. There are several types of wars, all of them bring destruction and death. All the wars are fought for different reasons, some are for power, some are for religion, some are for greed. There's no doubt that all the wars are fought for the same reason: to create a better world for themselves.

ARTIST

War is a catastrophic disaster that not only destroys lives, but also the world through its misery. There are several types of wars, all of them bring destruction and death. All the wars are fought for different reasons, some are for power, some are for religion, some are for greed. There's no doubt that all the wars are fought for the same reason: to create a better world for themselves.

THE COLOUR OF HOPE

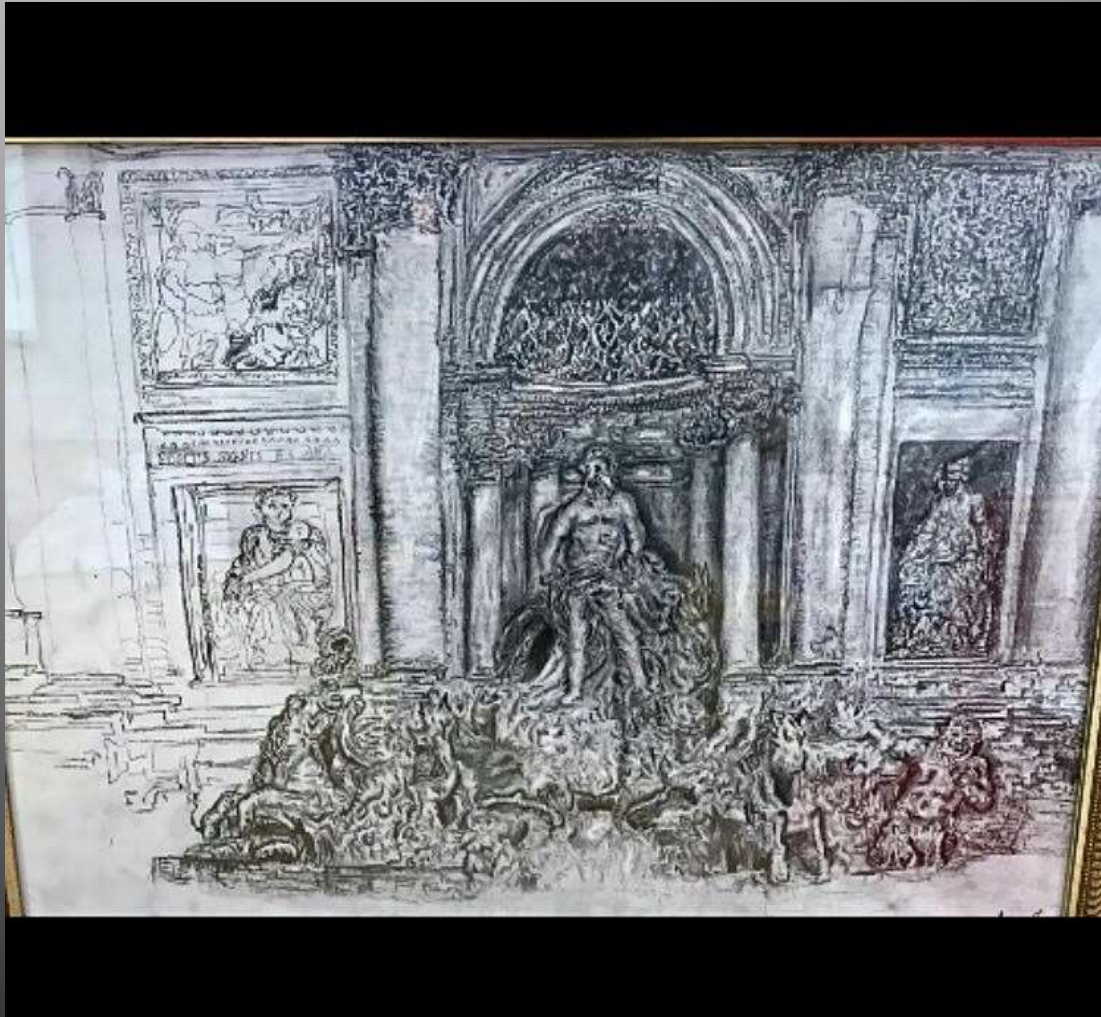
Green is commonly associated with life, growth, and renewal. It is a color that represents hope and optimism. In my artwork, the green of the child's clothing symbolizes the hope and future that the father is fighting for.

PARENTS

The word parents, mother, and father all hold strong meaning and memories for each person. Regardless of whether the connotations are negative or positive, the words trigger deep emotions for each individual.



Art Works



BIBLIOGRAPHY

Information

<http://cphmag.com/migrant-mother/>

<http://womenartandculture.blogspot.ae/2012/05/artanalysis-migrant-mother-1936->

<http://www.oberlin.edu/amam/asia/sculpture/documents/vocabulary.pdfihave.html>

<https://www.smashingmagazine.com/2015/06/design-principles-compositional-balance-symmetry-asymmetry/>

<http://study.com/academy/lesson/what-are-the-principles-of-art-definition-examples.html>

<https://www.lifesitenews.com/news/heart-rending-young-slovakian-sculptor-captures-post-abortion-pain-mercy-an>

<https://evenifministries.wordpress.com/2012/09/16/410/>

<http://www.catholicnewsagency.com/news/with-a-childs-touch-sculpture-seeks-to-comfort-those-who-mourn-abortion-38799/>

<http://artworkbyannarose.blogspot.ae/2014/06/new-self-portrait-wait-and-reward.html>

http://www.getty.edu/education/teachers/building_lessons/formal_analysis.html

<https://blog.ketchup.com/rules-of-composition/>

https://memory.loc.gov/ammem/awhhtml/awpnp6/migrant_mother.html

<http://press.uchicago.edu/Misc/Chicago/316062.html>

<http://www.oberlin.edu/amam/asia/sculpture/documents/vocabulary.pdf>

Images:

https://en.wikipedia.org/wiki/Florence_Owens_Thompson

http://www.loc.gov/rr/print/list/128_migm.html

<http://artworkbyannarose.blogspot.ae/2014/06/new-self-portrait-wait-and-reward.html>

<https://www.lifesitenews.com/news/heart-rending-young-slovakian-sculptor-captures-post-abortion-pain-mercy-an>

http://thenewyorkoptimist.com/AnnaRoseBainMay29_2013.html

<https://color.adobe.com/Primary-Red-Colour-Scheme-color-theme-221648/>

<https://gamedevelopment.tutsplus.com/articles/picking-a-color-palette-for-your-games-artwork--gamedev-1174>

<https://www.slideshare.net/michaelasanda/mitra-shadfar>